



LOTIC Series | Low-Payload Robot
Model: SF10 - K3100

The LOTIC is a series of low payload industrial robots tailored to handle small objects with excellent performance and flexibility at all times.

LOTIC is your indispensable helper in making cost-effective choices with a wide range of products.

With a finely segmented maximum movement radius of 3100 mm, you can precisely define the robot you need with excellent performance and stability while paying less for investment and energy costs.

All LOTIC series are equipped with LIKEPRECISION technology, the ultra-precise RV Precision Gearbox, which allows the robot to take full advantage even at high operating speeds.

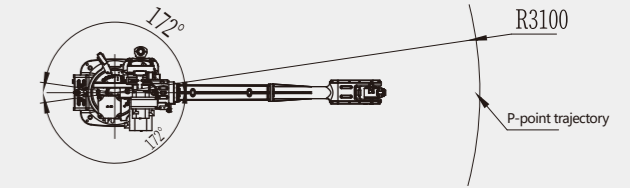
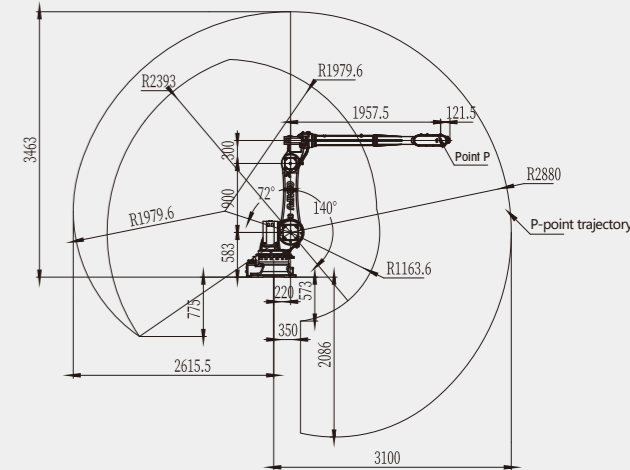
Applications



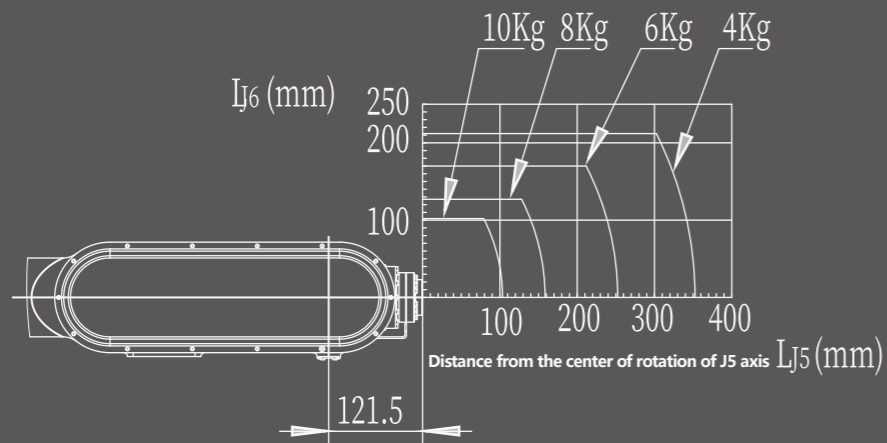
SF10 - K3100 Data Overview

Model	SF10 - K3100	
Structure	Vertically Articulated	
Number of Axis	6	
Radius	3100mm	
Payload	10kg	
Repeatability	±0.08mm	
Drive Mode	AC Servo Motor	
Maximum Speed	J1	125°/s
	J2	125°/s
	J3	140°/s
	J4	200°/s
	J5	210°/s
	J6	290°/s
Range of Motion	J1	±172°
	J2	+72°/-140°
	J3	+150°/-80°
	J4	±360°
	J5	±125°
	J6	±360°
Allowable Moment	J4	22N·m
	J5	22N·m
	J6	10N·m
Allowable Inertia	J4	1kg·m ²
	J5	1kg·m ²
	J6	0.2kg·m ²
Protection Rating	IP 65	
Operating Conditions	Temp.	0-45°C
	Humidity	Below 95%RH
	Vibration	Below 4.9m/s ²
	Other	Eliminate Signal Noise
Base Size	573*629mm	
Height	1899mm	
Weight	596KG	
Mounting Positions	Floor, Wall, Ceiling	
Power Consumption	4.5kVA	

SF10 - K3100 Range of Motion

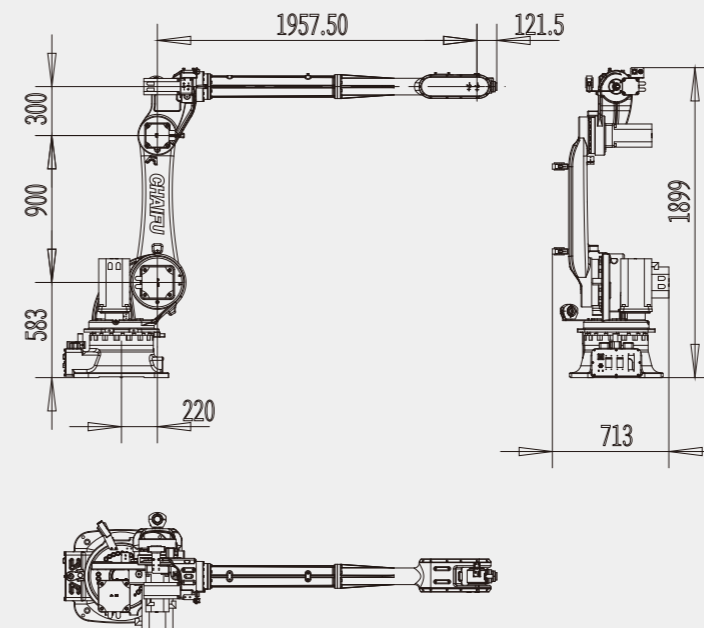


SF10 - K3100 Wrist Load Curve Chart

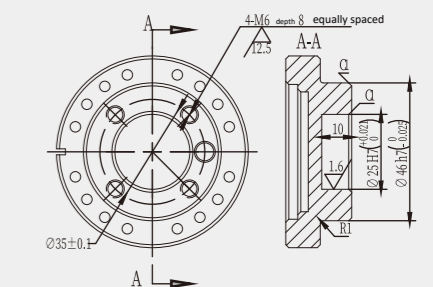


SF10 - K3100 Load Range Curve Chart

SF10 - K3100 External & Installation Dimensions



A-Way Diagram (End Flange Mounting Dimensions)



B-Way Diagram (Base Mounting Dimensions)

